

The Beginning Of Springtime

Claude Monet – Impressionism

The Bench
(Le Banc)

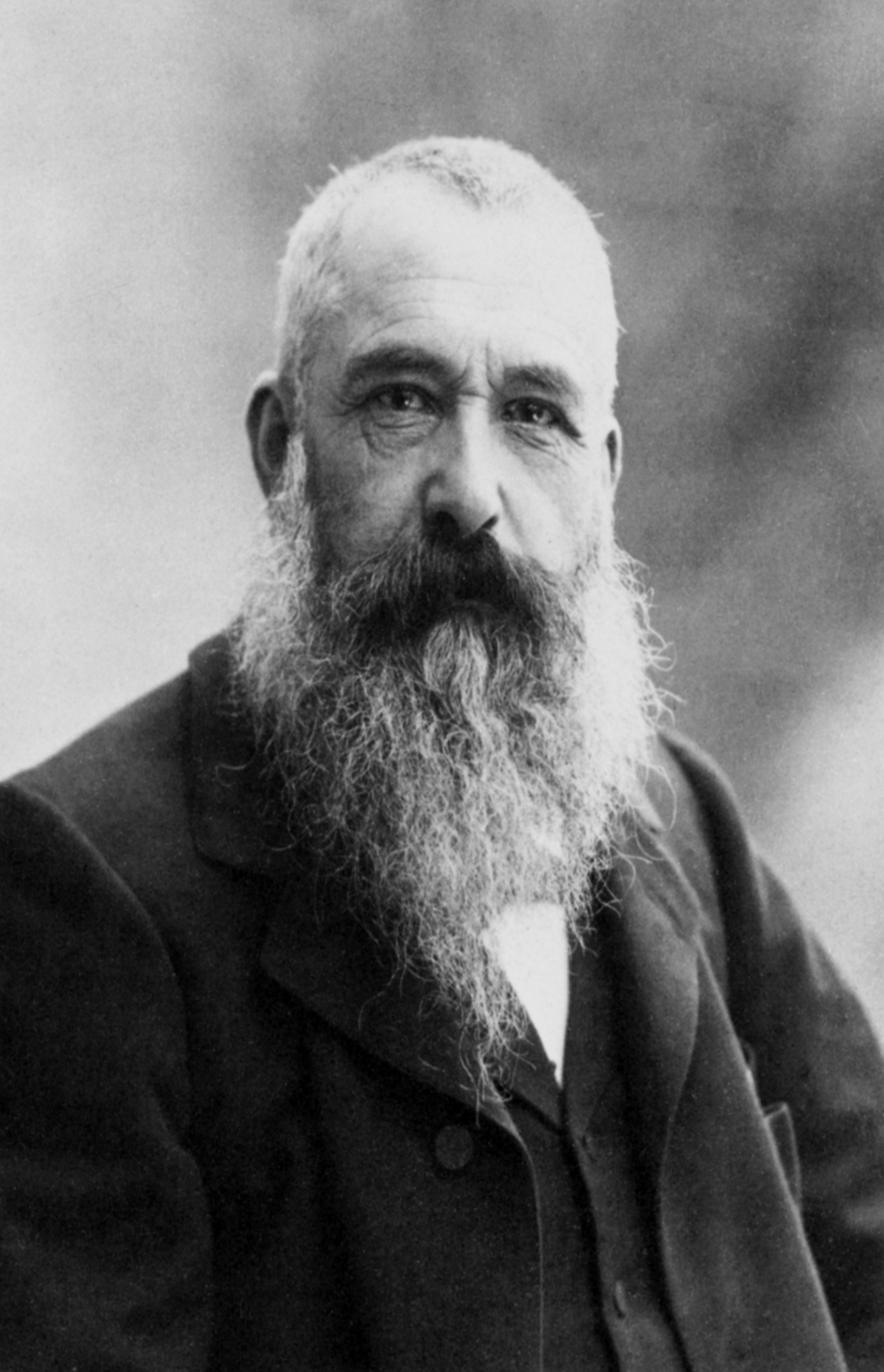


Table of contents

- Biography
- Most famous paintings
- Impressionism
- Our self-made poem

Claude Monet - Biography

- Born on 14 November 1840, Paris, France
- 1845: moved to Normandy
- Was supposed to go into the grocery business
- Mother was a singer
- Travelled to Paris to visit the Louvre
- Met other young painters in Paris over several years



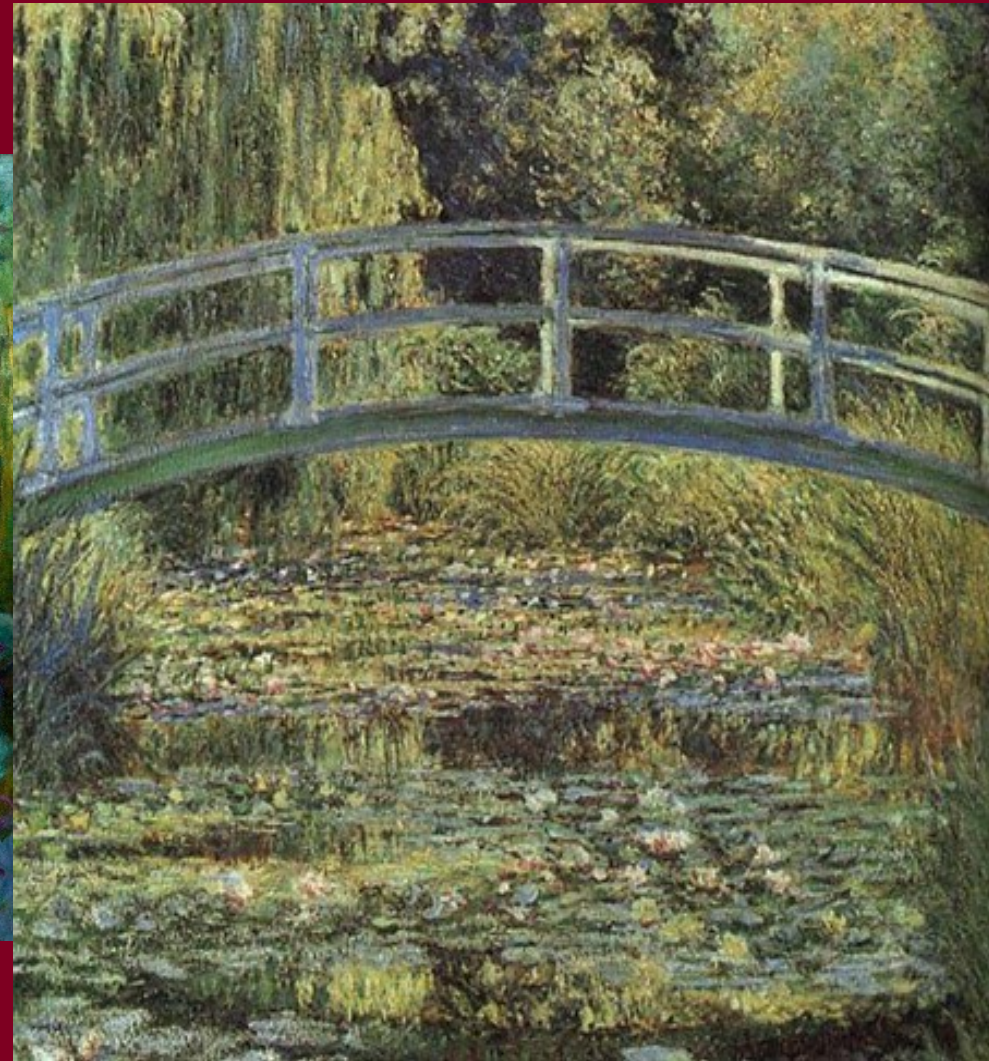
- 1862:
student of Charles Gleyre in Paris
- 1870:
married Camille Doncieux and fled to London
- Returned to Paris
- Had two children
- 5 September 1879,
Camille Monet died of tuberculosis

- After 1900: became increasingly famous
- Developed a formal garden at his property in Giverny
- Died of lung cancer on 5 December 1926

Most famous paintings



Water-Lilies



Water-Lily Pond



**Les Bateaux rouges,
Argenteuil**



**A pathway in Monet's
garden Giverny**

Characteristics of Impressionism

Art

- Colors have priority
- Interpretation and meaning depend on who's looking at the painting
- Painting outdoors (en plain air) and at night (effets de soir)
- The surface is opaque and colors are applied thickly
- Colors are applied side-by-side with as little mixing as possible

Literature

- Sensory impressions and mood are emphasized
- Description of a moment the way it is experienced
- Echoism and synesthesia are popular stylistic devices
- Rhyme and rhythm are prominent
- Lyric poetry is preferred

Music

- Whole-tone scales
- Usage of augmented triads
- Often quiet and no dynamic outbreaks
- Missing contrasts
- Changing tempo and shapeless rhythm
- Soft timbres such as woodwinds
- Usage of unusual instruments

The Beginning of Springtime

bloomy flowers inhabit the park
the sun's laughing down at them
a cold wind is whispering
gloomy sad skies are shading the place

a woman is gazing into the distance
with weary old eyes and seeing no end
in what she's doing she can't find a sense
her dream is a world that is new and different

a man is thinking of plans
and trying to soothe his dear

his goal is clear
he's standing there
all unaware
his foe is near

her back is facing her past
his flowers are lying here

as abandoned as their love

Sources

http://upload.wikimedia.org/wikipedia/commons/a/a4/Claude_Monet_1899_Nadar_crop.jpg

http://en.wikipedia.org/wiki/Claude_Monet

<http://www.biographyonline.net/artists/claude-monet.html>

<http://en.wikipedia.org/wiki/Impressionism>

Heukäufer, Norbert: Musik Abi Kompaktwissen Oberstufe